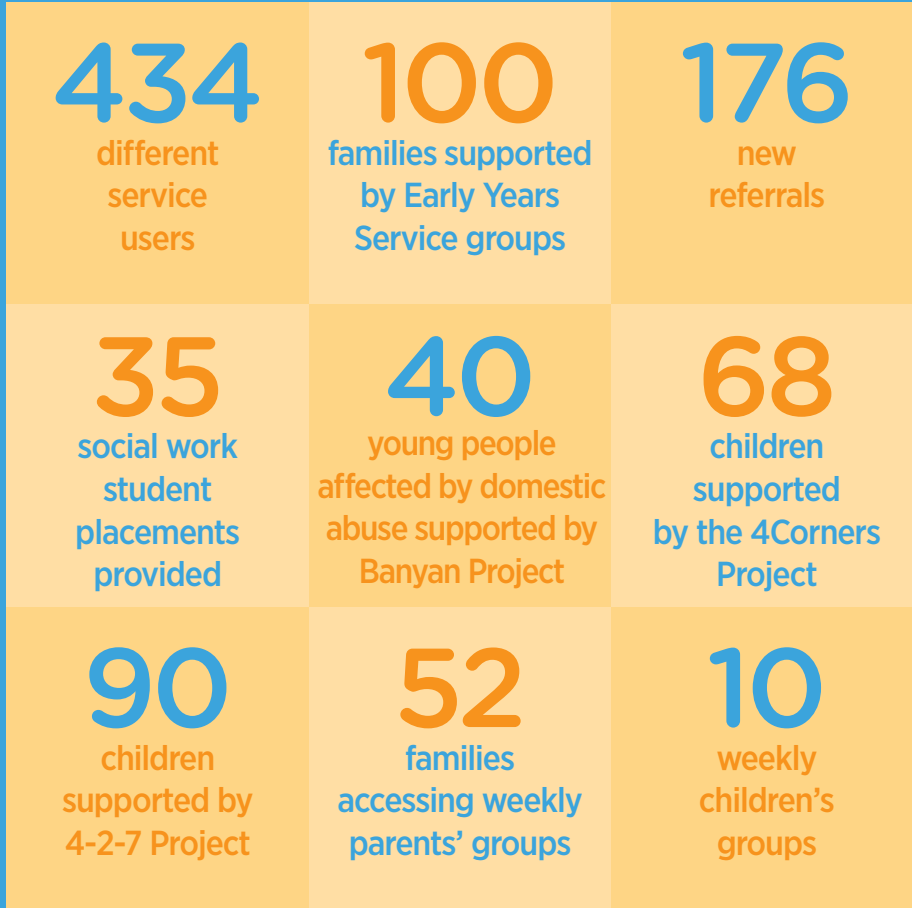


MCFB YEAR IN NUMBERS



Income and Expenditure Statement

Year ended 31st March 2017	2016/17	2015/16
Income	£	£
Grants and Donations	389,898	382,212
Fees	81,032	81,592
Other Income	2,148	2,212
	473,078	466,016
Expenditure		
Staff Costs	356,856	321,096
Property Expenses	43,937	42,420
Direct Costs - Children & Families	27,463	26,589
Administrative Costs	25,086	28,399
Student Placement Fees	10,766	9,082
Fundraising Costs	1,065	0
Depreciation	5,931	2,721
	471,104	430,307
Surplus/(deficit)	1,974	35,709

Balance Sheet

As at 31st March 2017	2016/17	2015/16
	£	£
Fixed Assets	15,791	9,942
Current Assets:		
Debtors & Prepayments	35,440	46,124
Bank & Cash Balances	332,282	321,588
	367,722	367,712
Current Liabilities:		
Creditors & Accruals	26,318	22,434
Net Current assets	341,404	345,278
Net Assets	357,195	355,220
Represented By:		
Unrestricted Funds	283,207	264,352
Restricted Funds	73,988	90,868
	357,195	355,220

ANNUAL REPORT 2016-2017



List of Funders and Donors

Very many thanks to all funders and donors whose generosity has enabled us to carry out our work over the past year. We could not have done it without your support.

EVOT
Big Lottery Fund
City of Edinburgh – 4Corners
City of Edinburgh - Early Years Service
The Robertson Trust
Comic Relief
BBC Children in Need
Voluntary Action Fund
Charles Hayward Foundation
RS Macdonald Charitable Trust
Shared Care Scotland - Creative Breaks Programme
The Noel Buxton Trust
Garfield Weston Foundation
The Ettrick Charitable Trust
CRH Trust
The Ryvoan Trust
The Maple Trust
Save the Children
The Silverhill Trust
St James' Playgroup
The Blackford Trust

JK Young Endowment Fund
The Barrack Charitable Trust
Mrs Margaret Rodan & Mr Ernest Watt
Miss M E Swinton Paterson's Charitable Trust
Port of Leith Housing Association
Leith Rotary Club
Scottish Book Trust
Scotmid Community Grant
Mrs M A Black's Charitable Trust

We also acknowledge the support from the following:

Open University
University of Stirling
University of Dundee
University of Edinburgh
University of Strathclyde
Robert Gordon University
Glasgow Caledonian University
University of the West of Scotland



MCFB Staff List - October 2017

Steve Gowenlock – Chief Executive
Anne Spiers – Depute CEO / Project Leader
Marise Gowenlock – Early Years Manager
Isabelle Mercadante – Project Worker
Dayna Mehrdad – Project Worker
Heather Tuffery – Project Worker
Wei Wang – Project Worker
Emma Watt – Project Worker
Jana Ridegova – Project Worker
Rosie Megginson – Project Leader
Philippa Kemp – Office Manager
Yun Zhang – Finance Manager
Anna Portaro – Sessional Worker
Lisa Pettersson – Sessional Worker
Lindsay Mann – Sessional Worker
Katie Reid – Sessional Worker
Julia Vidania – Footprints Inclusion Worker
Omolara Plang – Project Worker

Board of Directors
Wendy Paterson MBE – Chair
Jennifer Lowe
Sir Geoff Palmer OBE
David Lipetz
George Palattiyil
Ravinder Kaur
Susan Watson
Nina Methe
John Robertson – Treasurer

Did you know?

Profiles of our Staff and Directors can be found on our website: www.mcfb.org.uk

FOLLOW US ON:

Facebook, Instagram
Twitter and LinkedIn



50 Coburg St Edinburgh EH6 6HE

Company Limited by Guarantee SC259865. Scottish Charity No. SC027644



www.mcfb.org.uk

View from the Chief Executive

It is always difficult to capture a year's work in a short report, particularly in an agency like MCFB when there are always so many exciting developments. This year a Child and Family psychotherapist used the words 'ground-breaking' and 'cutting edge' when he was describing our Abhaya Project which works together with mothers and infants whose relationships have been negatively impacted by domestic abuse. And those words can justifiably be used to describe much of the work that takes place at MCFB. For example, this year we have developed a new pilot project called 'Safe Haven' which works with refugee children and families most of whom have been affected by trauma related to living in conflict zones and moves to refugee camps. From Autumn 2016 we started work with a number of young Syrian and Yazidi children whose history of trauma was impacting on their ability to settle in the classroom and on their peers. We were pleased with the positive impact of our interventions. We noticed a diminution of symptoms of PTSD and an increase in confidence. One 7 year old girl announced to her teacher and MCFB worker that she was 'not shy any more'. In December 2016 we held a workshop at an ESOL (English Speakers of Other Languages) conference for Syrian families to mark the first year of the Vulnerable Persons Relocation Scheme, which led to several new referrals. We have had extensive contact with our local MSPs and MPs to discuss the needs of these newly emerging communities and our local MSP raised a Parliamentary motion to raise awareness of the issues that these families have faced both in their country of origin (Syria) and presenting needs once arrived in Scotland.

Overall this year we worked with 434 different service users. We so much value the trust the families place in us and admire their resilience in coping with often very challenging circumstances and life events. This year we have focused on facilitating different family events such as community ceilidhs (in partnership with Citizen Curator); summer BBQs and a partnership with Into University where families visited Napier University. All of these events have been well attended and the relaxed atmosphere of the ceilidhs and summer barbecue seemed to provide a sense of freedom to those whose lives are often constrained by serious problems such as neighbourhood harassment, family illness, past traumatic experiences and present anxieties.

Over the year we offered 35 social work student placements which were almost unanimously evaluated very highly. We supported social work student placements in Shakti, Saheliya, Pilton Community Health Project and Mecopp. These partnerships continued to provide support for high quality work along with a very constructive learning experience for social work students. Students once again played a vital role in allowing us to produce the level of service which we do. They will also carry forward their learning here into the workplace. We believe that we make a real contribution to equipping future social workers with understanding and expertise in culturally competent practice and in creative ways of working with children and young people.

Finally I would like to thank the children and families with whom we work, all our staff, students, volunteers and Board members, who make working for MCFB so rewarding and interesting and to thank all our funders for investing in the future of our children and their families.

Steve Gowenlock

Highlights from the Projects

Group Work:

- Themes of graduation, exploration and self-esteem have featured largely in the groups.
- Our P7's have all successfully graduated to groups and activities in their communities which include local football teams, a drama group and a community based youth group for gamers.
- Others have been encouraged to try new activities in the local areas such as dance and music.
- We have been proudly sharing our favourite foods and began mapping where our families originate from on a giant wall map - all with a focus on celebrating diversity as well as shared experiences.

Footprints:

- Aimed at encouraging primary school aged children to make use of inclusive mainstream youth services in their own communities by working alongside our partners locally to share knowledge and good practice.
- From a small pilot in Pilton, the Footprints Inclusion work has continued this year. Our first group, partnering with Citadel Youth Project, will get underway in October 17 with a second group bringing MCFB partnership to another community (watch this space!) planned for the New Year.

Banyan Project:

- Engagement across the age range of 11-21 years.
- Upcoming plans for the 2017/18 period include potential Parents Information Groups on topics including the Teenage Brain and Positive Parenting Strategies.

Bright Choices:

In February 2017, for this year's International Day of Zero Tolerance to Female Genital Mutilation (FGM), the project, in partnership with the City of Edinburgh Child Protection Committee, organised a conference for 120 frontline professionals to raise awareness of FGM and the work that is currently being done to support survivors and protect girls and women at risk of the practice. Two service users spoke at this conference and our Project Worker gave an interview to BBC Scotland on the work of Bright Choices.



STOP PRESS: The Bright Choices Project won the Head Above the Parapet Award at the Scottish Social Services Awards 2017

Yolo Sistas:

- The girls from the group undertook a visit to the Scottish Parliament which led to two girls volunteering to take part in the Parliament's 'Europe and External Relations Committee Youth Event'.
- Views from the girls:
"We are like family."
"We called the group YOLO Sistas to remind ourselves to always try new experiences as 'you only live once', as well as knowing the group is supportive like your sisters."

4Corners:

- A fantastic trip south of the border to watch Manchester City v Sunderland.
- Our Dalry Primary School pilot project launched in September 2016 and has been a huge success!
- We ran a partnership with Save the Children (Take Care) about risk in their local community, and made a map of the safe and risky places in Craigmillar.

4-2-7 Project:

- Two successful multi-cultural ceilidhs for children and families run in partnership with Citizen Curator.
- 90 children supported in group work and 1-1 interventions.
- Working with over 15 primary schools and early years settings.

Early Years Service:

- Summer outing to Five Sisters Zoo
- Supporting Stanwell Nursery in creating a transition group and booklet "I'm going to Stanwell Nursery School" translated into Arabic, Polish and Urdu.
- Project Worker invited to join the Bookbug selection panel to discuss which books will be selected for the Bookbug bags gifted to young children by the Scottish Book Trust
- Supported over 100 families through our Friday group, Chinese Flower Group, therapeutic group and home-based support.

